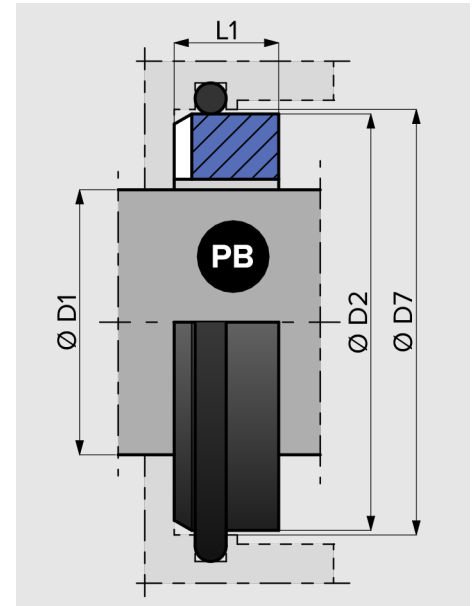
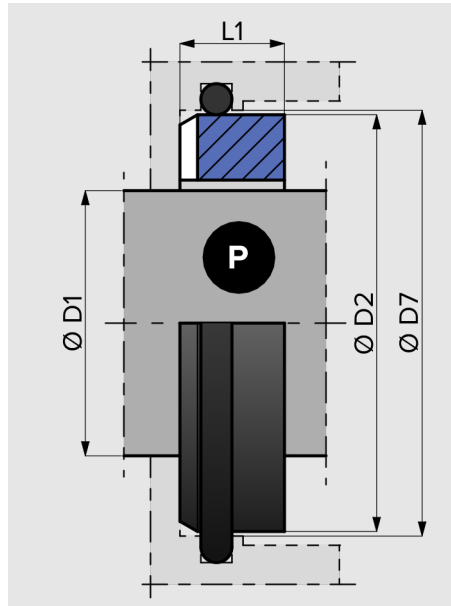
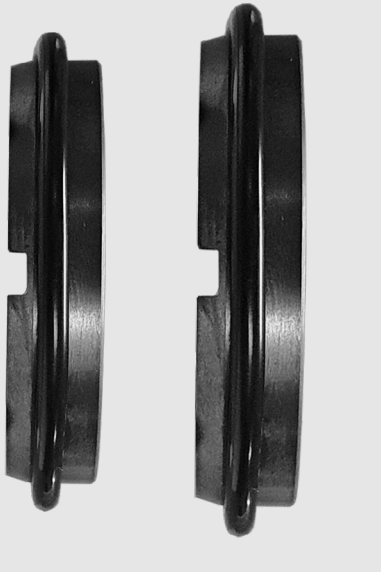


P / PB SEAT 'IMPERIAL - BLOCK SEAT' SPECIFICATION SHEET



- ▶ Square section design
- ▶ Improved heat transfer
- ▶ Anti-rotation by friction & pin

For use in higher pressure environments due to simple square design, providing good thermal stability and assists heat transfer through direct contact with the housing base.

P seat is our shortened designation for John Crane's 'PP' seat which is their standard 'P' seat with provision for an anti-rotation pin.

P seat is designed for the OD to match imperial dimensions, with the cavity itself being slightly oversized to accommodate the O-ring / housing design.

PB is our designation where the cavity matches imperial dimensions, with the seat OD being slightly undersized.

▶ **Materials of Construction**

Stationary Face: SiC
Elastomer: N, V or EP

P EQUIVALENT

John Crane: PP
AESSEAL: S011U
Vulcan: Type 32

PB EQUIVALENT

EagleBurgmann. ?

P SEAT

D1	D7	L1	D2	
0.500"	25.60	11.18	1.000"	25.40
0.625"	31.95	10.30	1.250"	31.75
0.750"	35.12	10.30	1.375"	34.93
0.875"	38.30	10.30	1.500"	38.10
1.000"	41.48	11.15	1.625"	41.28
1.125"	44.65	11.15	1.750"	44.45
1.250"	47.83	11.15	1.875"	47.63
1.375"	51.00	11.15	2.000"	50.80
1.500"	54.18	11.15	2.125"	53.98
1.625"	60.53	12.75	2.375"	60.33
1.750"	63.70	12.75	2.500"	63.50
1.875"	66.88	12.75	2.625"	66.68
2.000"	70.05	12.75	2.750"	69.85
2.125"	76.40	14.33	3.000"	76.20
2.250"	79.58	14.33	3.125"	79.38
2.375"	82.75	14.33	3.250"	82.55
2.500"	85.93	14.33	3.375"	85.73
2.625"	85.93	15.93	3.375"	85.73
2.750"	89.10	15.93	3.500"	88.90
2.875"	95.45	15.93	3.750"	95.25
3.000"	98.63	15.93	3.875"	98.43
3.125"	101.80	19.84	4.000"	101.60
3.250"	104.98	19.84	4.125"	104.78
3.375"	108.15	19.84	4.250"	107.95
3.500"	111.33	19.84	4.375"	111.13
3.625"	114.50	19.84	4.500"	114.30
3.750"	117.68	19.84	4.625"	117.48
3.875"	120.85	19.84	4.750"	120.65
4.000"	124.03	19.84	4.875"	123.83

PB SEAT

D1	D2	L1
0.500"	25.25	11.1
0.625"	28.43	11.1
0.750"	31.60	11.1
0.875"	34.78	11.1
1.000"	37.95	12.7
1.125"	41.13	12.7
1.250"	47.48	12.7
1.375"	50.65	12.7
1.500"	53.83	12.7
1.625"	57.00	12.7
1.750"	60.18	12.7
1.875"	63.35	12.7
2.000"	66.53	12.7
2.125"	69.70	14.3
2.250"	72.88	14.3
2.375"	76.05	14.3
2.500"	79.23	14.3
2.625"	82.40	15.9
2.750"	85.58	15.9
2.875"	88.75	15.9
3.000"	91.93	15.9
3.125"	95.10	15.9
3.250"	98.28	15.9
3.375"	101.45	15.9
3.500"	104.63	15.9
3.625"	107.80	17.5
3.750"	114.15	17.5
3.875"	117.33	17.5
4.000"	120.50	17.5