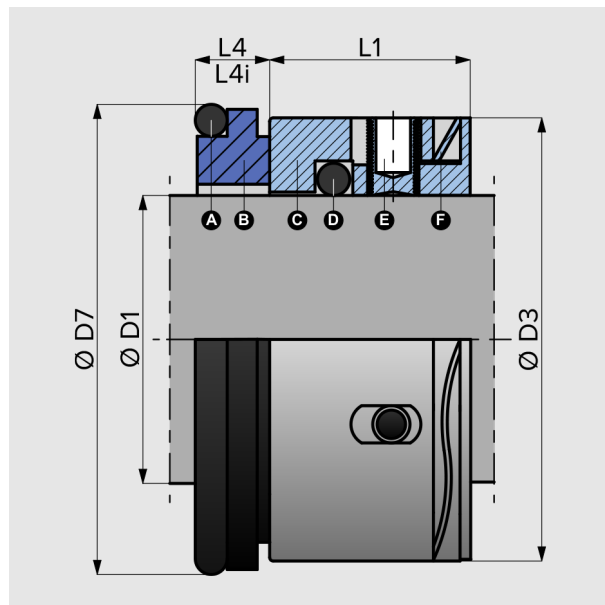
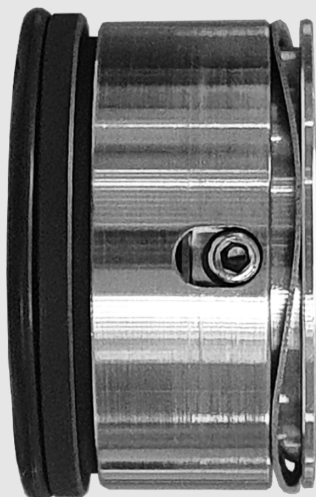


# H80

## 'TYPE 80' SPECIFICATION SHEET



- ▶ **Compact, bi-directional**
- ▶ **Hygienic applications**
- ▶ **Wave-spring pusher**
- ▶ **Internal or External mounted**

H80 is a compact cartridge unit, having a robust positive drive, providing for bi-directional rotation.

It is designed to fulfil the current requirements of the Food Industry in both profile and material terms.

It can be either internally or externally mounted.

▶ **Operating conditions**

Temperature: -30°C to +260°C  
 Pressure: up to 17 bar, 245 psi  
 Speed: up to 20m/s, 4000 fpm

▶ **Material options**

Rotary Face: S.S or TC  
 Stationary: CAB or TC  
 Elastomer: N, V or EP  
 Metal Parts: Stainless Steel

### DIMENSIONS

- = Original Type 80 sizes
- ◊ = Sizes to suit DIN
- L1 = Working Length
- D7 = Bore Size
- L4 = Solid Seat
- L4i = Inserted Seat

### PARTS

- A** O-ring
- B** Stationary Face
- C** Rotary Pushing Face
- D** O-ring
- E** Set Screw
- F** Wave-spring

### EQUIVALENT

- Type 80
- W01 / W01U
- W02 / W02U
- Type 1688

D1	D1	D3	L1	D7	L4	L4i
• 16mm	• 0.625"	27.0	19.1	28.57	6.3	6.5
	• 0.750"	30.3	19.1	31.75	6.3	6.5
◊ 20mm		31.0	19.1			
◊ 22mm		33.0	19.1			
• 24mm		34.2	19.1	35.45	7.6	7.1
◊ 25mm	• 1.000"	35.2	19.1			
• 28mm		40.0	19.1	42.00	7.6	7.1
	• 1.125"	40.0	19.1	41.27	7.6	-
• 30mm		41.0	19.1	42.70	7.6	7.1
• 32mm	• 1.250"	42.5	19.1	44.45	7.6	7.1
◊ 33mm		44.0	19.1			
• 35mm	• 1.375"	45.6	19.1	47.62	7.6	7.1
• 38mm	• 1.500"	52.0	21.1	53.97	8.1	8.3
◊ 40mm		53.8	21.1			
◊ 43mm		56.0	21.1			
◊ 45mm	• 1.750"	58.3	21.1	60.32	8.1	8.3
◊ 48mm	• 1.875"	61.5	21.1	63.50	8.1	8.3
• 50mm		62.0	21.1	63.96	8.1	8.3
	• 2.000"	64.7	22.1	66.67	9.6	9.8
	• 2.125"	71.0	22.1	73.02	9.6	9.8
• 54mm		71.0	22.1	73.90	9.6	-
• 54.6mm	• 2.150"	72.6	22.1	75.00	9.6	-
• 55mm		73.0	22.1	75.00	9.6	9.0
◊ 60mm		76.0	25.8			
• 63mm		79.3	25.8	83.00	9.1	8.0
	• 2.500"	85.0	25.8	88.90	9.1	8.0
◊ 65mm		82.3	25.8			
◊ 70mm	• 2.750"	89.0	25.8	95.25	9.1	8.0
	• 2.875"	94.8	25.8	98.43	9.1	8.0
• 75mm		96.8	25.8	100.43	9.1	8.0
	• 3.000"	97.0	25.8	101.60	9.1	8.0
• 80mm		99.6	25.8	104.00	9.1	8.0
• 95mm		119.0	25.8	125.00	9.1	8.0
• 100mm		124.0	25.8	130.00	9.1	8.0
• 150mm		171.5	25.8	175.35	9.1	8.0